



Justrite Safety Group

Dry Areas - Medium duty

409 Sof-Tred Plus™



Dry Areas - Medium duty

409 Sof-Tred Plus™

Ergonomic benefit derived from 9.4 mm thick worker platform comprised of a construction of microcellular vinyl consisting of millions of air bubbles that provide basic worker comfort. Pebble pattern provides non-directional traction and is easy to clean.

All four sides are bevelled and sealed to minimize tripping hazards.

Recommended use:

- Medium duty
- Industrial Environments
- For placement in manufacturing plants, assembly lines, picking, packing and logistics warehouses, individual work stations.

Specifications:

- Microcellular vinyl
- Backing: Microcellular PVC foam
- Bevelled edges on all sides
- Overall thickness: 9,4 mm
- Weight: 2,8 kg/m²
- Slip rating: R10
- Free of DOP, free of DMF, free of ozone depleting substances, free of silicone and free of heavy metals

Standard sizes:

- 60cm x 91cm
- 91cm x 150cm

Full rolls:

- 60cm x 18.3m
- 91cm x 18.3m
- 122cm x 18.3m

Custom lengths:

- 60cm x linm
- 91cm x linm
- 122cm x linm

Colours:

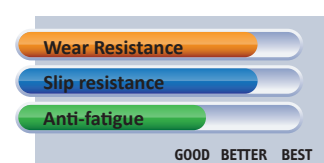
- Black, Black/Yellow, Grey

Cleaning instructions:

- Daily sweeping with a brush



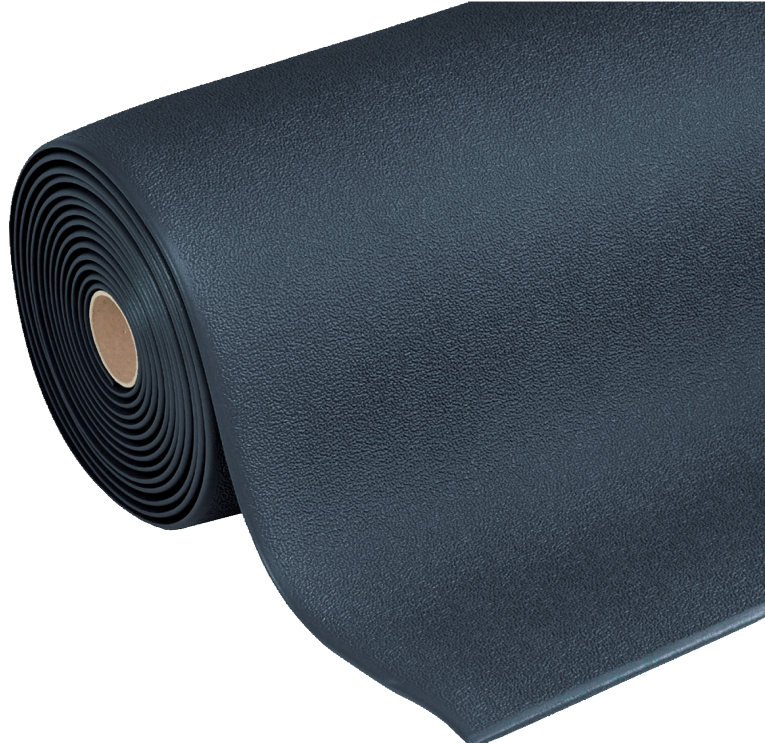
PRODUCT TESTING



GOOD BETTER BEST

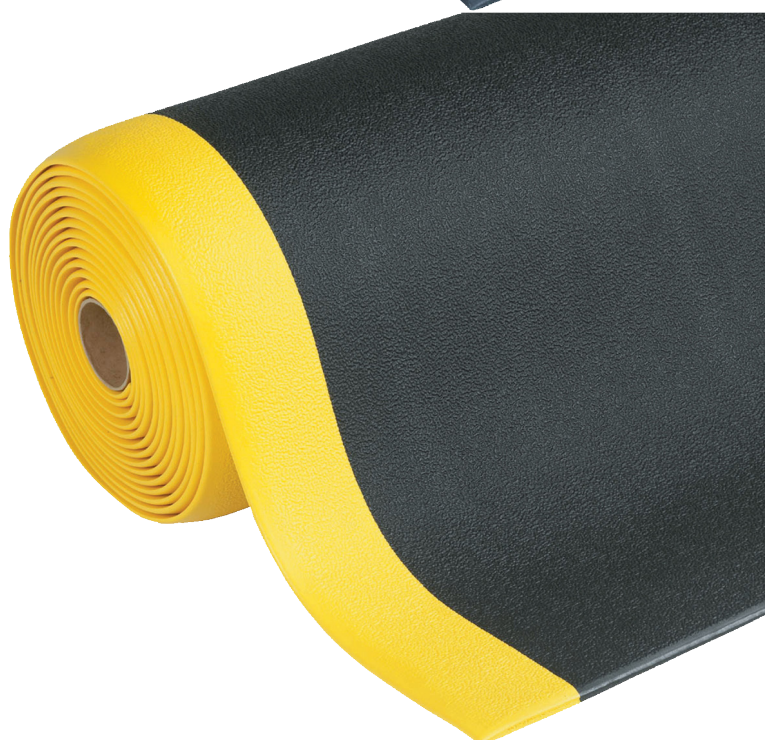
409 Sof-Tred Plus™ (black)

| Art. nr. | Dimensions | Weight kg |
|------------|---------------|-----------|
| 409S0323BL | 60cm x 91cm | 1,6 |
| 409S0335BL | 91cm x 150cm | 3 |
| 409R0324BL | 60cm x 18.3m | 31 |
| 409R0336BL | 91cm x 18.3m | 46 |
| 409R0348BL | 122cm x 18.3m | 62 |
| 409C0324BL | 60cm x linm | 1,7 |
| 409C0336BL | 91cm x linm | 2,6 |
| 409C0348BL | 122cm x linm | 3,4 |



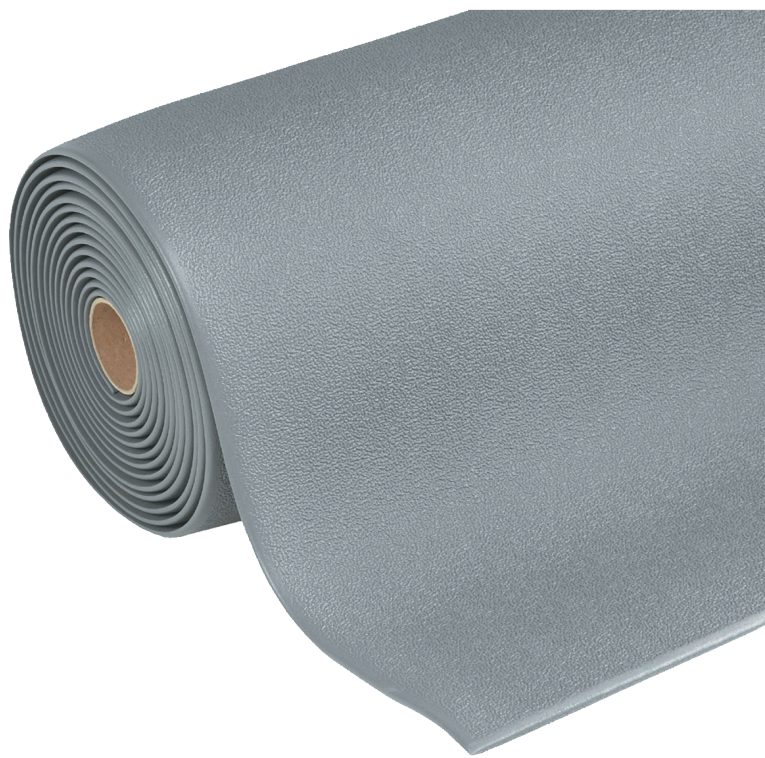
409 Sof-Tred Plus™ (black/yellow)

| Art. nr. | Dimensions | Weight kg |
|------------|---------------|-----------|
| 409S0323BY | 60cm x 91cm | 1,3 |
| 409S0335BY | 91cm x 150cm | 3,2 |
| 409R0324BY | 60cm x 18.3m | 26 |
| 409R0336BY | 91cm x 18.3m | 38 |
| 409R0348BY | 122cm x 18.3m | 51 |
| 409C0324BY | 60cm x linm | 1,7 |
| 409C0336BY | 91cm x linm | 2,1 |
| 409C0348BY | 122cm x linm | 2,8 |



409 Sof-Tred Plus™ (grey)

| Art. nr. | Dimensions | Weight kg |
|------------|---------------|-----------|
| 409S0323GY | 60cm x 91cm | 1,6 |
| 409S0335GY | 91cm x 150cm | 3,8 |
| 409R0324GY | 60cm x 18.3m | 31 |
| 409R0336GY | 91cm x 18.3m | 46 |
| 409R0348GY | 122cm x 18.3m | 62 |
| 409C0324GY | 60cm x linm | 1,7 |
| 409C0336GY | 91cm x linm | 2,6 |
| 409C0348GY | 122cm x linm | 3,4 |



409 Sof-Tred Plus™

GENERAL DESCRIPTION

| | |
|-----------------|------------------------------------------------------------------------------------|
| Type | Dry Areas - Comfort™ |
| Description | Pebble pattern surface, microcellular vinyl consisting of millions of air bubbles. |
| Recommended use | Dry Areas |
| Surface | Structured pebble pattern |
| Category | Ergonomic, Anti-fatigue Safety Matting Medium duty |
| Colours | Black, Black/Yellow, Grey |
| Edges | Bevelled edges on all sides |

TECHNICAL SPECIFICATIONS

| | |
|-------------------|------------------------|
| Material | Microcellular vinyl |
| Backing | Microcellular PVC foam |
| Process | Foaming |
| Total weight | 2,8 kg/m ² |
| Overall thickness | 9,4 mm |

TESTS

| | | |
|------------------------|---------------------|--------------------|
| Compression deflection | U.S. | 0.21 cm 0.06 cm |
| Slip rating | DIN 51130 | R10 |
| Sustainability | Recyclable material | |
| Abrasion resistance | ASTM D3884-01 | 17.06% 8.4% |
| Coefficient friction | ASTM C1028-96 | 0.89 |
| Elongation | ASTM D412 | 109.4% |
| Tear Strength | ASTM D1004 | 8.2 lb |
| Hardness | ASTM D2240-02 | 25 Shore A |
| Surface flammability | ASTM D2859 | Pass |

DIMENSIONS

| Standard sizes | Full rolls | Custom lengths |
|----------------|---------------|----------------|
| 60cm x 91cm | 60cm x 18.3m | 60cm x linm |
| 91cm x 150cm | 91cm x 18.3m | 91cm x linm |
| | 122cm x 18.3m | 122cm x linm |